



Arteco-Logic

NEXT



Arteco-Logic NEX I

ARTECO-LOGIC Next is the VMS Client that simplifies and streamlines the management of all integrated solutions of the Arteco Video Management Family: Small Business, Professional, and Enterprise.

Based on 25 years of experience in software development, ARTECO-LOGIC Next is the ideal tool for viewing live/recorded video, managing real-time video events, and controlling IP, Analog, LPR and Input/Output devices.

ARTECO-LOGIC Next is designed to give every user an immediate, interactive, and dynamic experience. This design makes it perfectly suited to many different application fields, operator requirements and operating environments.



“Video Analytics”

ARTECO-LOGIC Next fully utilizes the complete suite of Video Analytics including Area Analytics (violated area, trip-wire, loitering) and Object Analytics (abandoned/removed, counting, speed threshold). With default settings and accuracy ratings, set-up and event management has never been easier.



“Situational Awareness”

ARTECO-LOGIC Next is integrated with industry-leading 360 degree cameras that allow the “Dewarping” of fisheye lens technology for total digital pan/tilt/zoom control of the image. Movement in the camera can be performed in live or recorded video. Apply multiple analytics applications to a single field of view.



“License Plate Recognition”

ARTECO LOGIC Next allows complete synergy between Video Management Software and License Plate Recognition. Users can receive security events in the Event Log when License Plates are detected. Plates can be queried based by time/date and I/O devices can be activated based on results.



Arteco Mobile

By downloading ARTECO-MOBILE at the iTunes Appstore, Google Play or Blackberry App World, you can view the output of your video from anywhere in the world at any time with your Tablet or Smartphone.





The interface of ARTECO LOGIC NEXT is immediate and simple. All elements are designed to be easy to find, speed-up decision-making, and amplify usability. The result is an interface that gives users complete control and intuitive management with a modular structure to live video, recorded video, and configuration settings.



LIVE Environment

Real-Time Monitoring and total control of all cameras and managed devices.



RECORDING Environment



Instantly view recorded video based on channel events or browse the time-line based on search criteria. Research, review, export images or video immediately with the click of the mouse. The built-in "FAILOVER" feature and Recording Diagnostic Tool provide notification in the event of issues with the video integrity or storage drives, providing greater reliability for critical systems.



CONFIGURATION Environment

Centralized management and configuration of all cameras, devices, users, and archiving. Easy to use auto-search for all network cameras reduces set-up time for installation. The UPnP (Universal Plug and Play) module helps locate supported devices in the network environment. Disk Management allows drive auto-balancing, failover storage space and drive aggregation.



PERSONALIZATION



Managing complex or large systems requires optimizing every resource to help make decisions in real-time.

ARTECO-LOGIC Next helps users adapt to all situations with a simple, practical and completely customizable interface.

Modular Interface



All windows in the interface follow a modular environment that can be moved and placed anywhere within the frame or even floated outside of the frame of the software to create windows.

Duplicated video grids can be moved out to a multi-monitor environment to create a completely customizable Video-Wall with no additional fees.





The order and organization of information is an essential component to ARTECO-LOGIC Next.

By creating groups of useful devices based on the individual user's responsibility, system management and information retrieval is stream-lined and efficient. Groups can consist of servers, video sources, managed I/O's and maps.

Simplified Navigation

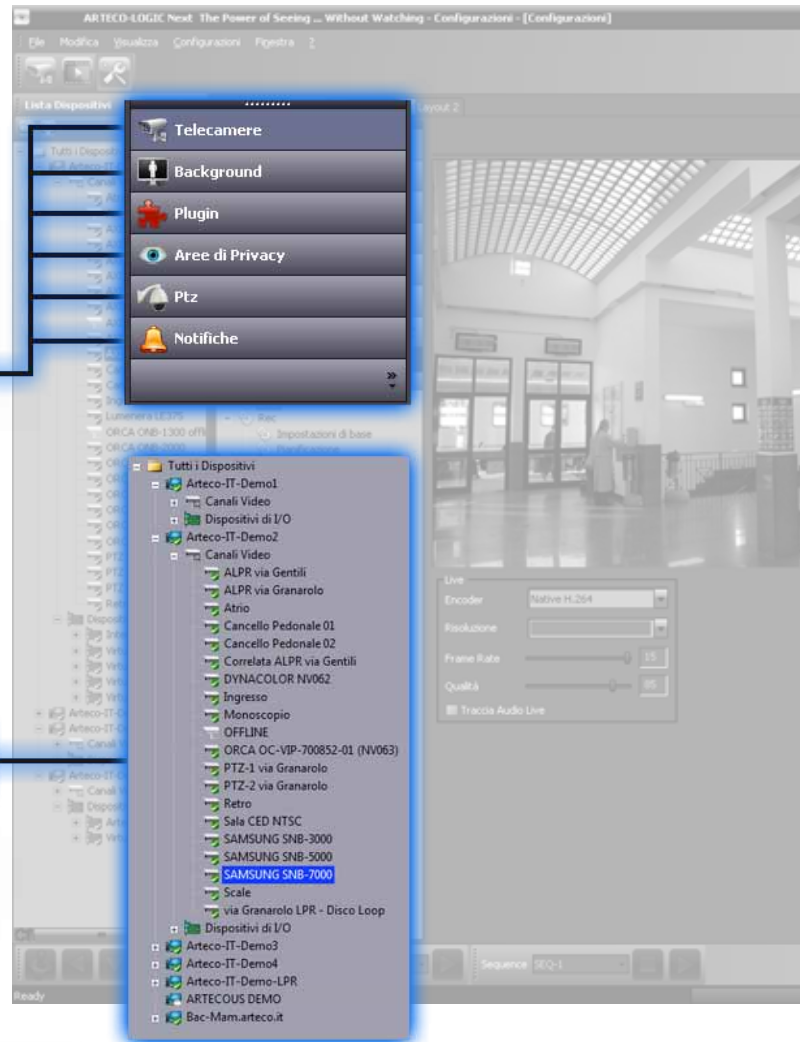
The double navigation constraints simplify any configurable parameters for each device and in every single aspect. The dual-configuration design seamlessly simplifies any configurable parameter for each device in every setting aspect.

Configuration of **all parameters** of a single device

SAMSUNG SNB-7000

Configuration of a single parameter for **all devices**

Background



Open



ARTECO-LOGIC Next has been is an Open Software Architecture that integrates with and can accommodate to additional security systems such as fire, intrusion alarms, home automation and access control.



Arteco USA



14515 North Outer Forty - Suite 150
Chesterfield, Missouri 63017 · 5798 USA
Phone: (314) 434-5331
Fax: (866) 462-132
info@artecous.com

Headquarters



ARTECO S.r.l.
Via Gentili, 22
48018 Faenza (RA) Italia
Tel. +39 0546 645777
Fax +39 0546 645750

