

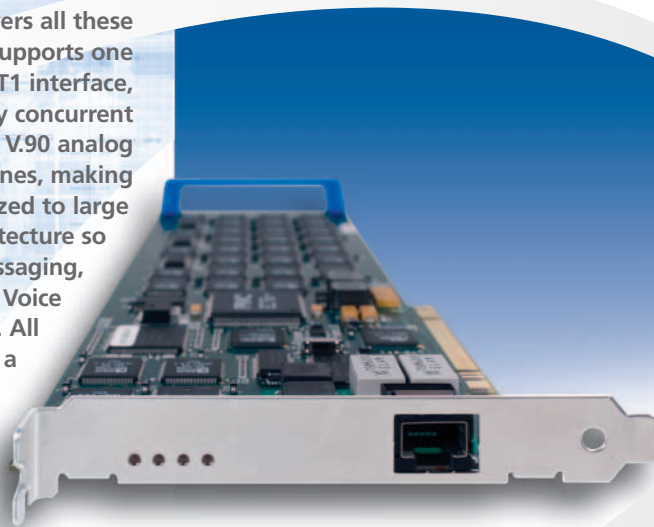
# Diva™ Server PRI/E1-30

Today's network administrators face the challenge of streamlining their network administration without sacrificing performance. They need a flexible solution that allows one server to manage all the fax, messaging, and remote access needs of their organization.

The Diva Server PRI/E1-30 adapter answers all these needs perfectly. This active PCI adapter supports one ISDN Primary Rate Interface (PRI), E1 or T1 interface, enabling one server to support up to thirty concurrent communications with a mix of ISDN devices, V.90 analog modems, GSM mobile phones and fax machines, making it an excellent choice for medium-sized to large businesses. It is based on open systems architecture so that industry-leading Fax, Unified Messaging, Computer Telephony Integration (CTI) and Voice over IP (VoIP) applications integrate easily. All email, voicemail and fax can be managed on a single server. Upgrading Diva Server PRI/E1-30 with new enhancements is easy as free software upgrades are available via the web.

The flexibility of the Diva Server PRI/E1-30 adapter provides network administrators with a simple, cost-effective, and powerful open communications solution.

## *The Ultimate Fax, Voice and Data Platform for PRI, E1 and T1*



### Key Benefits

#### Supports Best-of-Breed Applications

The support of standardized software interfaces, such as CAPI 2.0 or TAPI enables the Diva Server PRI/E1-30 adapter to be used with industry-leading software packages, enabling the network administrator to build a communication server that best suits their needs.

#### Free Software Development Kit

The Diva Server SDK makes it easy for software vendors to develop their own communication application for the Diva Server PRI/E1-30 adapter.

#### Scaleable

Multiple Diva Server PRI/E1-30 adapters can be mixed and matched in one system in combination with any other Diva Server adapter to meet an organization's increasing communication needs.

#### High Performance

On-board CPU and digital signal processors (DSPs) remove performance bottlenecks, as they perform key real-time tasks that would ordinarily cause an excessive burden on the host server.

#### Fax and Unified Messaging

The Diva Server PRI/E1-30 adapter supports third party software applications giving complete support for Group 3 fax, voice mail and email messages. Features include DTMF, ECM, MR, MMR, MH and 33.6 kbps Fax. V.42bis compression and V.42 error-correction ensure fast and reliable transmissions for modems and fax.

#### CTI Server

With support of CAPI, TAPI and Diva Server SDK, the Diva Server PRI/E1-30 adapter fully features any CTI server application. A full provision of supplementary services, such as call forwarding and explicit call transfer makes the Diva Server PRI/E1-30 an ideal solution for third party Interactive Voice Response (IVR) and Contact Center applications.

#### Voice over IP (VoIP)

The Diva Server PRI/E1-30 adapter supports third party software giving complete support for VoIP Soft-PBXs. High performance is guaranteed with support for echo cancellation (G.168) and voice compression in the DSP of the adapter.

#### Easy to Install

The ease of installation is guaranteed as the Diva Server PRI/E1-30 adapter conforms to Intel and Microsoft Plug and Play standards, eliminating the need to manually configure the server.

#### Ready to use worldwide

With support for all the multinational ISDN protocols, the Diva Server PRI/E1-30 adapter is ready for use virtually anywhere in the world.

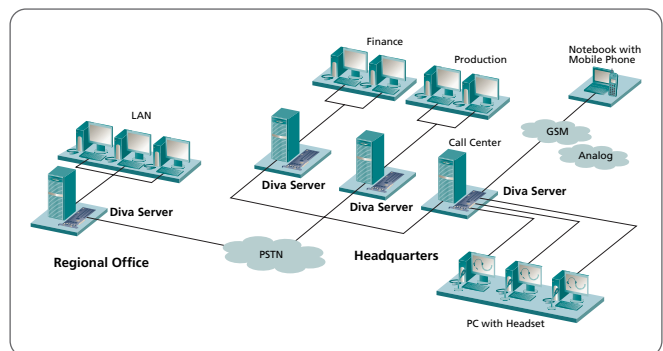
## Technical Specifications

<b>Hardware:</b>	<ul style="list-style-type: none"> <li>Active ISDN adapter for Primary Rate Interface (PRI), E1 and T1 interface</li> <li>Plug and Play Interface</li> <li>Bus type: PCI rev. 2.2 up to 66 MHz (3.3V / 5V universal signaling)</li> <li>RJ45 Connector</li> <li>64-bit RISC CPU, 300 MHz, 420 MIPS</li> <li>I/O Addresses and Interrupt are placed by the system</li> <li>Power Down Management</li> <li>31 x 33 MHz, 60 MIPS DSP</li> <li>32 MB onboard SDRAM</li> <li>Form factor: Full size PCI</li> <li>Physical dimensions: <ul style="list-style-type: none"> <li>312.00 mm x 106.68 mm</li> <li>352.17 mm x 126.37 mm (incl. bracket and retainer)</li> </ul> </li> <li>Scaleable to 8 adapters per system</li> <li>Production Quality: ISO 9002</li> <li>5 year warranty</li> </ul>
<b>Power Consumption and Environmental</b>	<ul style="list-style-type: none"> <li><b>Power consumption:</b> 0.92 A @+5 V typ., 2,6 A @+5V max.</li> <li><b>Operating temperature:</b> 10°C to 50°C</li> <li><b>Maximum tolerance in power supply variation:</b> -5% to +5%</li> <li><b>Operating humidity:</b> 10% to 90% (non-condensing)</li> <li><b>Storage temperature:</b> 0°C to 70°C</li> </ul>
<b>Driver Software</b>	<ul style="list-style-type: none"> <li><b>Supported operating systems:</b> Microsoft: Windows 2003 Server, 2000, XP, Windows 2003 Server 64-Bit Edition, Windows XP 64-Bit Edition. Linux: Red Hat, SuSE and Debian distributions</li> <li><b>D-Channel and Signaling Protocols:</b> ETSI-DSS1 (Euro-ISDN), NI-1 (North America National ISDN 1), 1TR6 (Germany), NET3 (Belgium), VN3/4/6 (France), 4ESS (AT&amp;T), 5ESS (AT&amp;T), 5ESS (Lucent), DMS100 (Nortel), T1 – Robbed Bit Signaling, INS-64 (Japan), INS-1500 (Japan), Australia on-ramp, Q-SIG, E1-R2 (China), E1-R2 (India), Channelized E1, External Signaling (transparent D-channel), Direct Access Mode (no signaling), Network Termination (NT Mode)</li> <li><b>B-Channel Protocols:</b> HDLC, Synchronous PPP and MLPPP, X.75 (LAPB), Transparent, X.25, T.30, T.90NL, T.70NL, Rate adaptation (56 kbps), up to V.90, V.42, V.42bis, V.110, V.120, PIAFS</li> <li><b>Application Interfaces:</b> Microsoft: WAN Miniport, COM Port, CAPI 2.0, TAPI, Diva Server API (SDK) Linux: TTY, CAPI 2.0, Diva Server API (SDK)</li> <li><b>Diagnostic Tools:</b> B-channel and D-channel trace program</li> <li><b>M-Adapter Feature (patent pending):</b> Combined Virtual Adapter, Internal Call Transfer, Explicit Call Transfer Emulation</li> </ul>
<b>Fax and Voice features:</b>	<ul style="list-style-type: none"> <li>DTMF transmission, detection and generation</li> <li>Generic Tone detection and generation</li> <li>Cross board switching</li> <li>ISDN Supplementary Services <ul style="list-style-type: none"> <li>Number identification services (CLIP, CLIR, COLP, COLR, KEY, MSN, DDI, SUB)</li> <li>Call offering services (TP, CFU, CFB, CFNR)</li> <li>Call completion services (CW, HOLD, ECT)</li> <li>Charging Services (AoC)</li> <li>Three-party conference</li> <li>Large Conference</li> </ul> </li> <li>Fax group 3 support <ul style="list-style-type: none"> <li>Up to 33.600 bps with each B-channel (send and receive)</li> <li>Fax compression MH, MR, MMR</li> <li>Error Correction Mode (ECM)</li> <li>Fax polling/ Fax on demand</li> <li>Fax tone detection</li> <li>Color Fax (JPEG Format)</li> <li>Standard, fine, super-fine and ultra-fine resolution</li> </ul> </li> <li>DTMF Clamping and Filtering</li> <li>Automatic Gain Control (AGC)</li> <li>On-board switching and conferencing</li> <li>VoIP support <ul style="list-style-type: none"> <li>G.711 voice codec (64 kb/s, <math>\mu</math>-law, A-law)</li> <li>G.726 voice codec (32 kb/s)</li> <li>GSM voice codec (13 kb/s)</li> <li>G.168 echo cancellation, up to 32 ms tail length</li> <li>Adaptive jitter buffer</li> <li>Voice activity detection (VAD)</li> <li>Comfort noise generation (CNG)</li> <li>Real Time Protocol (RTP framing)</li> </ul> </li> <li>Support for fax class 1 and 2</li> <li>Fax group 4 support</li> <li>Remote Access (via HDLC, V.90, GSM, V.120, X.75) <ul style="list-style-type: none"> <li>GSM support (V.110) up to 38.400 bps</li> <li>Communicates with analog modems (up to V.90). Up to 56.000 bps with each B-channel</li> </ul> </li> </ul>

## Ordering Information

Product Name	Product Code
Diva Server PRI/E1-30 – International	306-209
Diva Server PRI/E1-30 – Australia	306-210
Diva Server PRI/E1-30 – China	306-243

National variants might be available. Please contact the Eicon Networks office in your region or look at [www.eicon.com](http://www.eicon.com) for further information.



**Corporate headquarters**  
**Eicon Networks Corporation**  
 9800 Cavendish Blvd 5th Floor  
 Montreal Quebec Canada  
 H4M 2V9  
 Tel: +1 (514) 745-5500  
 Fax: +1 (514) 745-5588

**Regional sales head offices**  
**Americas:**  
**Eicon Networks Inc.**  
 Parkway Centre II  
 2805 N. Dallas Parkway Suite 200  
 Plano Texas 75093 USA  
 Tel: +1 (972) 473-4500  
 Fax: +1 (972) 473-4510  
 Offices: Dallas, Montreal

**Europe, Middle East, Africa:**  
**Eicon Networks (UK) Ltd.**  
 Kings Chase 107-123 King Street  
 Maidenhead Berkshire SL6 1DP  
 United Kingdom  
 Tel: +44 (0) 1628 641770  
 Fax: +44 (0) 1628 641780  
 Offices: Barcelona, Bergamo, Stockholm,  
 Den Haag, Ljubljana, London, Paris,  
 Leonberg, Berlin, Dusseldorf, Munich

**Asia Pacific:**  
 Offices: Beijing, Hong Kong,  
 Kuala Lumpur, Shanghai