

# POWERLINK PRO 100™

strategies  
business  
BANDWIDTH AGGREGATION

isp failover:  
54.897  
95.647

## For Serious Networks . . .



### Can you afford an Internet outage? Then don't...

When your business success depends on uninterrupted access to the Internet, you can't rely on a single Internet connection or single provider. When downtime or slowdowns cost you money protect your Network Performance with PowerLink™ products.

The PowerLink Pro 100™ creates multi-homed networks without BGP to eliminate link congestion and bottlenecks for fault tolerant connectivity and continuous service availability. Key benefits include:

- Intelligent traffic management and load balancing across all WAN links
- Automatic link failover, including VoIP Failsafe with traffic shaping to guarantee availability and performance
- Transparent firewall for easy installation
- Best path routing of traffic for optimized link utilization
- Flexibility to economically scale your network

As networks grow quality of service takes on greater significance. As the network is used more bandwidth is consumed causing inconsistent performance and delays. With many of today's mission critical applications such as VoIP, Video, Oracle, SAP, etc. performance fluctuations become simply unacceptable. PowerLink Pro prevents these problems and enhances performance and reliability. **Now your most critical applications are guaranteed to get the bandwidth required for smooth and consistent performance.**

### Features

WAN link redundancy with automatic failover protection for 24/7 Internet availability

Multi-homing without BGP

Bandwidth Aggregation up to 100 Mbps from multiple ISPs (works with any type Internet connection)

QoS Traffic management for guaranteed performance to all business critical applications

Transparent firewall setup

VoIP Failsafe with advanced traffic shaping

DoS and DDoS protection

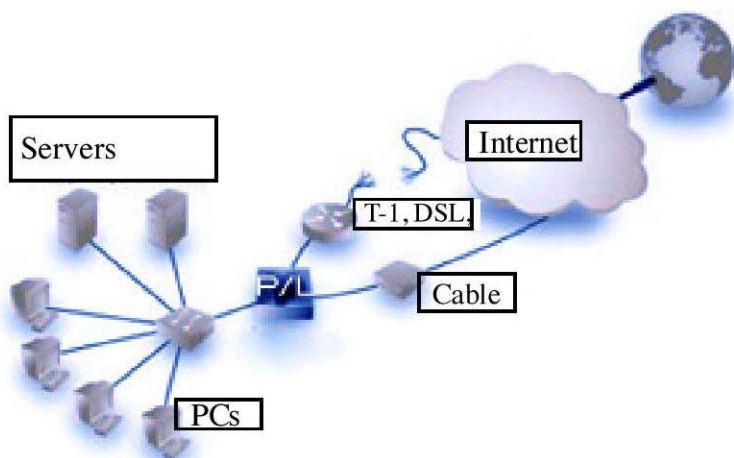
Hardware failover (optional)

Email notification with alerts



# POWERLINK PRO 100™

	PowerLink Pro 50™	PowerLink Pro 100™
Intelligent traffic management / load balancing	inbound & outbound	inbound & outbound
Automatic link failover and failback	<b>x</b>	<b>x</b>
Bandwidth aggregation throughput (Mbps)	5	100
Best path routing		<b>x</b>
VoIP failsafe with traffic shaping		<b>x</b>
Redundant WAN links supported	2	2-15
DoS and DDoS protection	<b>x</b>	<b>x</b>
Number of Domain Names supported	1 (with 5 host names)	128
QoS multi-level traffic shaping		<b>x</b>
VPN advanced tunnel failover and aggregation	<b>x</b>	<b>x</b>
Email notification upon alerts	<b>x</b>	<b>x</b>
Hardware failover (redundant device)	<b>x</b>	<b>x</b>
SNMP		<b>x</b>
Transparent firewall with routing		<b>x</b>
Authoritative DNS server	<b>x</b>	<b>x</b>
Web manager application interface	<b>x</b>	<b>x</b>
Order Number	PL-PRO50	PL-PRO100
List Price	\$1295	\$ 2995



High Availability

No Downtime

Ever . . .



Order your Powerlink Pro100 or Pro50 from us:

1850 Crown Drive #1112 · Dallas, TX 75234 · 972-831-1600 · [www.abptech.com](http://www.abptech.com) · [sales@abptech.com](mailto:sales@abptech.com)