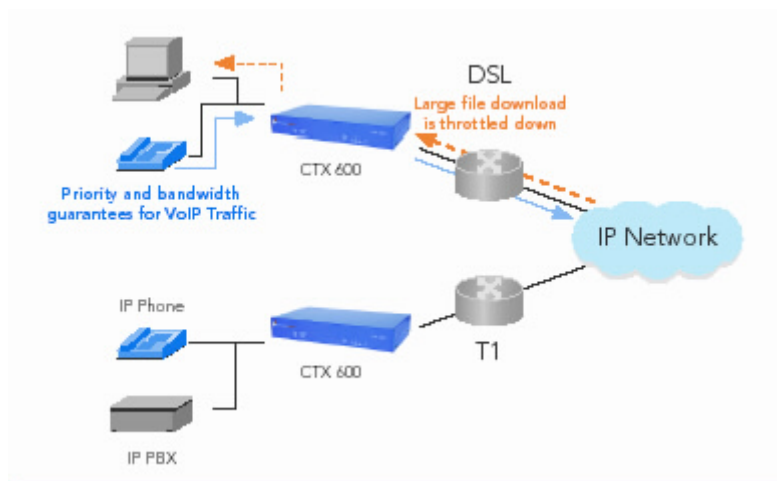


CTX 600 VoIP Accelerator

INTELLIGENT, AFFORDABLE QOS APPLIANCE, BANDWIDTH / TRAFFIC MANAGER DELIVERS TOLL-QUALITY VOIP PERFORMANCE FOR SMB AND REMOTE OFFICES. CTX 600 VOIP ACCELERATOR INSTANTLY INCREASES QUALITY OF EXPERIENCE WHILE REDUCING OPERATING COSTS

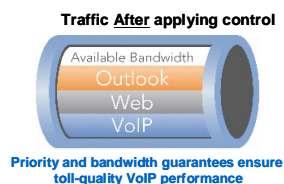
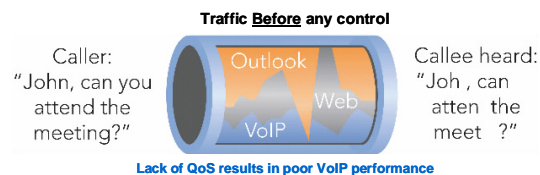
Experiencing voice distortion, word loss, echo, talker overlap or dropped calls on your VoIP network?

Solve your VoIP problems quickly and easily with the application-aware CTX 600 VoIP Accelerator. Applications are classified at wire-speed on a per flow basis so VoIP gets top priority and guaranteed bandwidth. Other data applications like e-mail and browsing are given best effort service.



PRECISE AND GRANULAR TRAFFIC MANAGEMENT TECHNOLOGIES

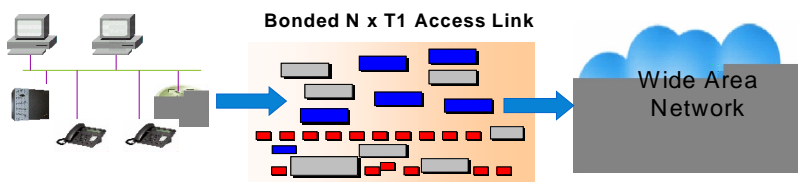
- Inspects and classifies all traffic at wire speed, identifying delay-sensitive applications
- Uses advanced Class Based Queuing and TCP Rate Shaping to ensure bandwidth guarantees and priority for important traffic
- Controls inbound and outbound traffic, communicating with all TCP remote hosts to pace traffic, thus eliminating congestion, retransmission and delays
- Optimizes packet size to avoid large data packet in front of delay-sensitive VoIP packet



EFFICIENT, ASSURED WAN OPTIMIZATION

In recent tests, the Converged Access QoS technology delivered toll-quality MOS scores for up to 47 concurrent VoIP calls over a T1 circuit—*while* achieving over 95% link utilization. This efficiency makes the

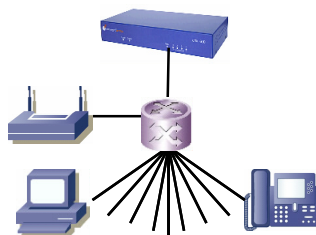
product ideal for companies that must optimize WAN costs while adding new, performance-sensitive applications like VoIP.



Bigger WAN pipes do not guarantee better performance – VoIP packets can still be impacted by data packets and the cost increases

LOWEST TCO WITH EASY THREE-STEP SET UP

Simple configuration interface walks you through the process. All you need to do is define the upstream/downstream bandwidth available, the number of VoIP calls to protect and the Codec used. The rest is done by the system. A data application class can be configured with the same ease. The CTX 600 is easily integrated with an existing router network, operating as a bridge located just before the WAN router.



THE CTX 600 OUTPERFORMS ROUTER QoS AND BANDWIDTH UPGRADES WITH IMPROVED VOICE PERFORMANCE AND OPTIMUM BANDWIDTH UTILIZATION AT THE LOWEST POSSIBLE COST

CTX VoIP ACCELERATOR	Router QoS
Controls outbound AND inbound traffic, communicating with all TCP hosts to smooth large downloads and prevent congestion, retransmission and delays	Routers give no control at all on inbound downloads. Retransmissions cause huge network inefficiencies and prohibit TCP flows from achieving their potential throughput
Controls applications very precisely enabling very high WAN bandwidth utilization	When multiple VoIP calls are placed and there is lots of traffic or large downloads across the WAN, routers just do not work
Eliminates traffic peaks and the need to purchase more bandwidth.	Routers provide only a coarse degree of control; usually forcing you to buy more bandwidth to support the same number of calls because the link cannot be saturated to its maximum. Additional bandwidth does not solve the problem.
Guarantees bandwidth for critical applications, while throttling back other less important applications. Uses advanced traffic management techniques to ensure VoIP traffic is forwarded before large downloads affect quality	Because there is no prioritization, IP applications tend to use all the bandwidth available, so a large e-mail attachment will affect a VoIP call in progress even if you add more bandwidth
CTX 600 is simple to install, configure and operate with instant results	Routers are complex to set up and update. Routers require special training which is problematic for SMBs trying to cut support costs